

# Letter Tracing



# B b

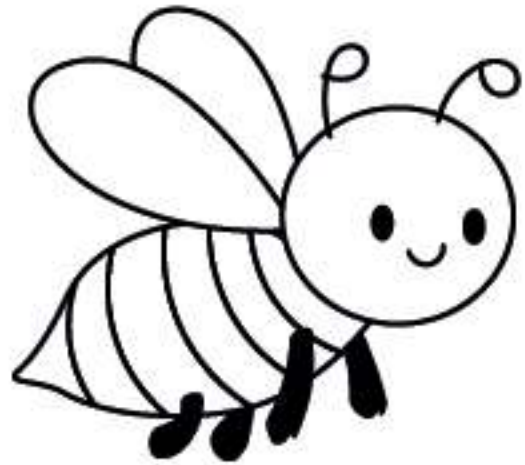
Circle it.

n	B	y	b
L	e	a	L
B	F	b	v

Color it.



Bear



Bee

B b

B b

B b

Trace it. Write it.

Tracing practice area with four rows of handwriting lines. Each row contains a dotted letter for tracing followed by blank space for independent writing. The first two rows are for uppercase 'B' and the last two rows are for lowercase 'b'.